



Trafalgar
HIGHLANDS

ELEVATION A, B & C

1914
SQ. FT.

COSCORP ^{CO}_{INC}

The Rose

32' SINGLE



ELEVATION A



ELEVATION B



ELEVATION C

The Rose

ELEVATION A, B & C
1914^{SQ. FT.}



ELEVATION A

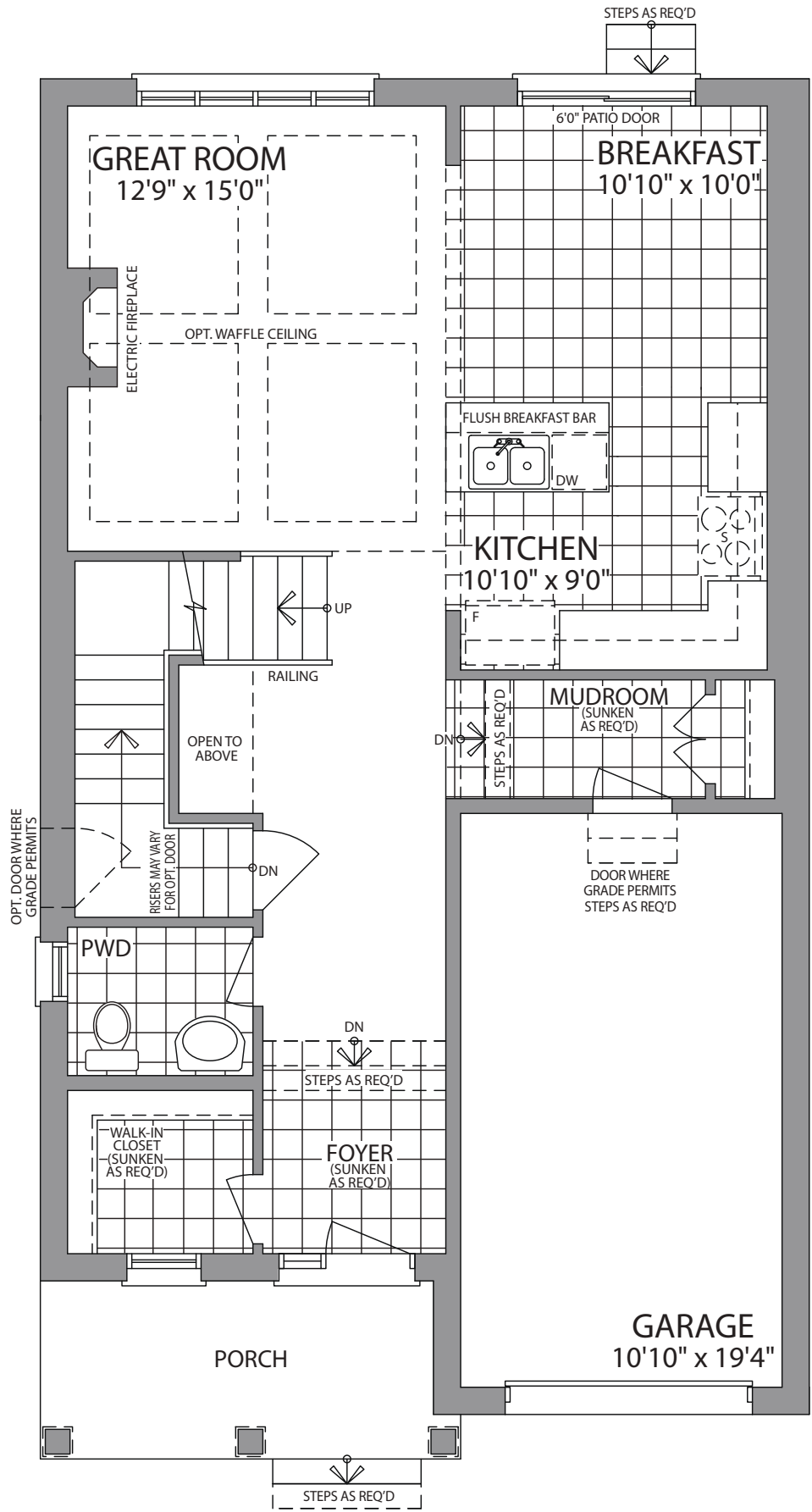


ELEVATION B

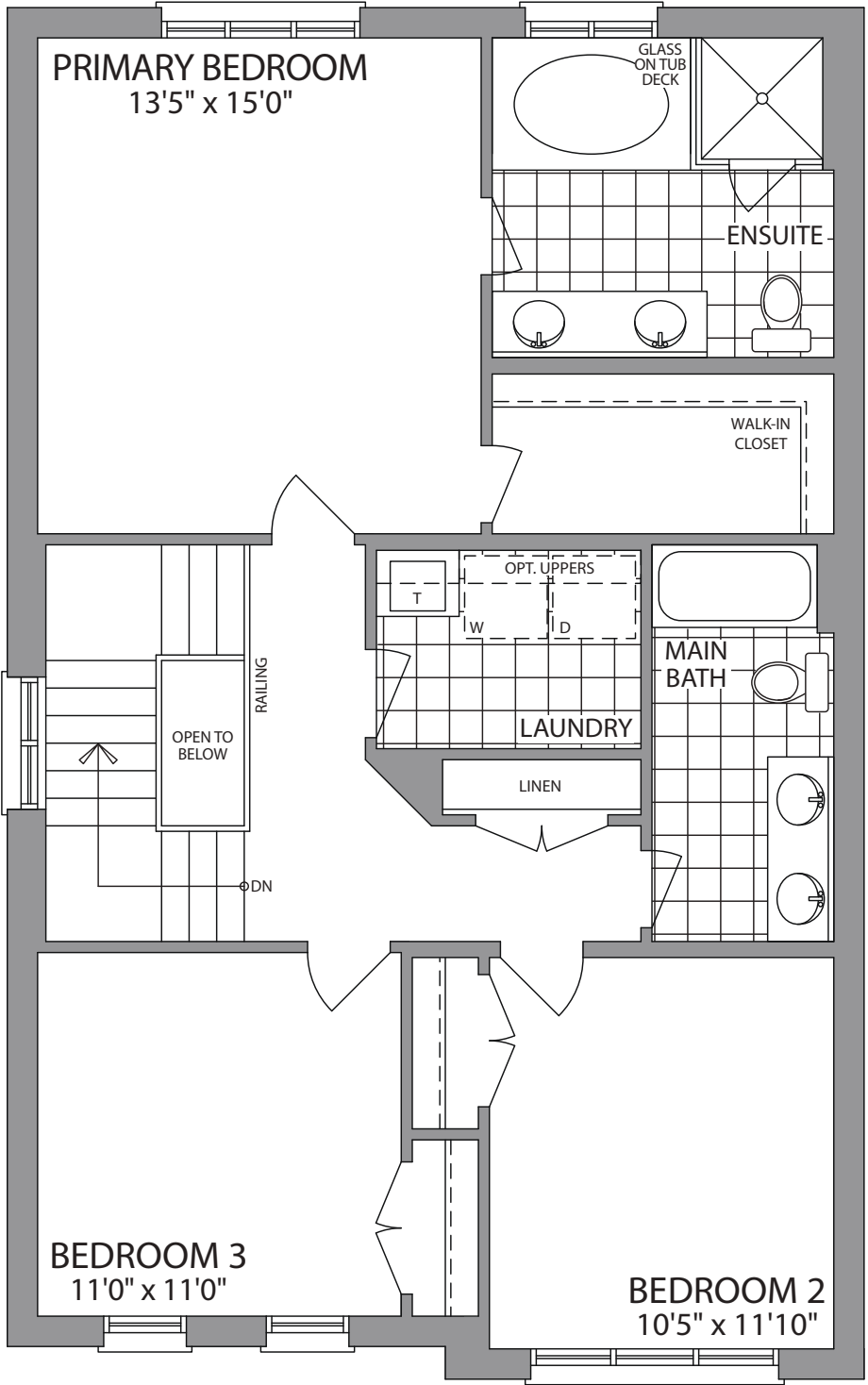


ELEVATION C

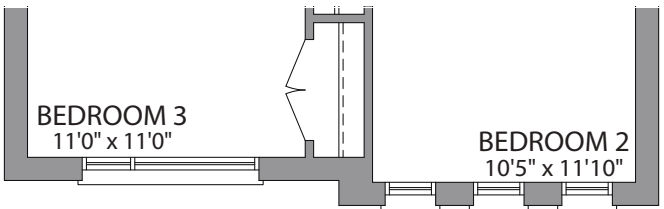
Trafalgar
HIGHLANDS



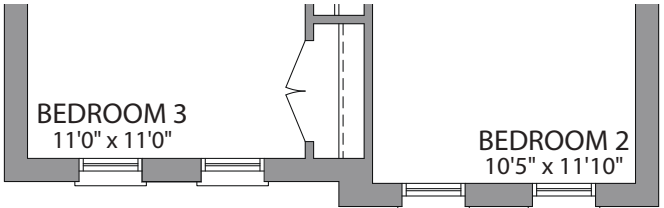
GROUND FLOOR
ELEVATION A



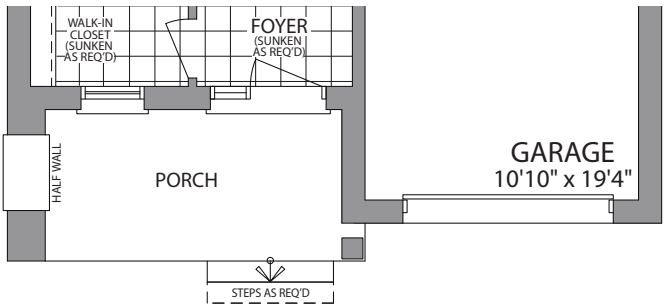
SECOND FLOOR
ELEVATION A



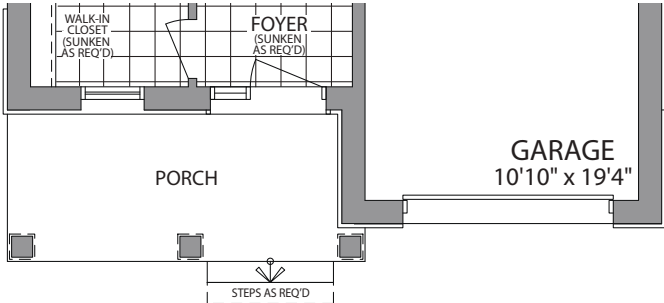
SECOND FLOOR
ELEVATION C



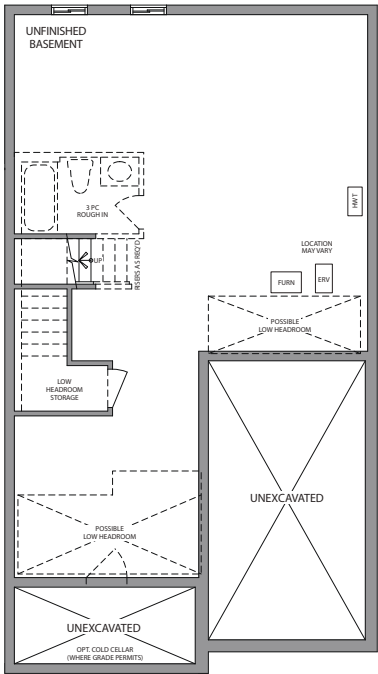
SECOND FLOOR
ELEVATION B



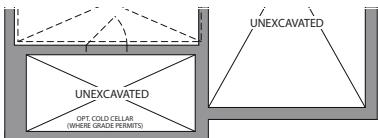
GROUND FLOOR
ELEVATION C



GROUND FLOOR
ELEVATION B



BASEMENT
ELEVATION A & B



BASEMENT
ELEVATION C